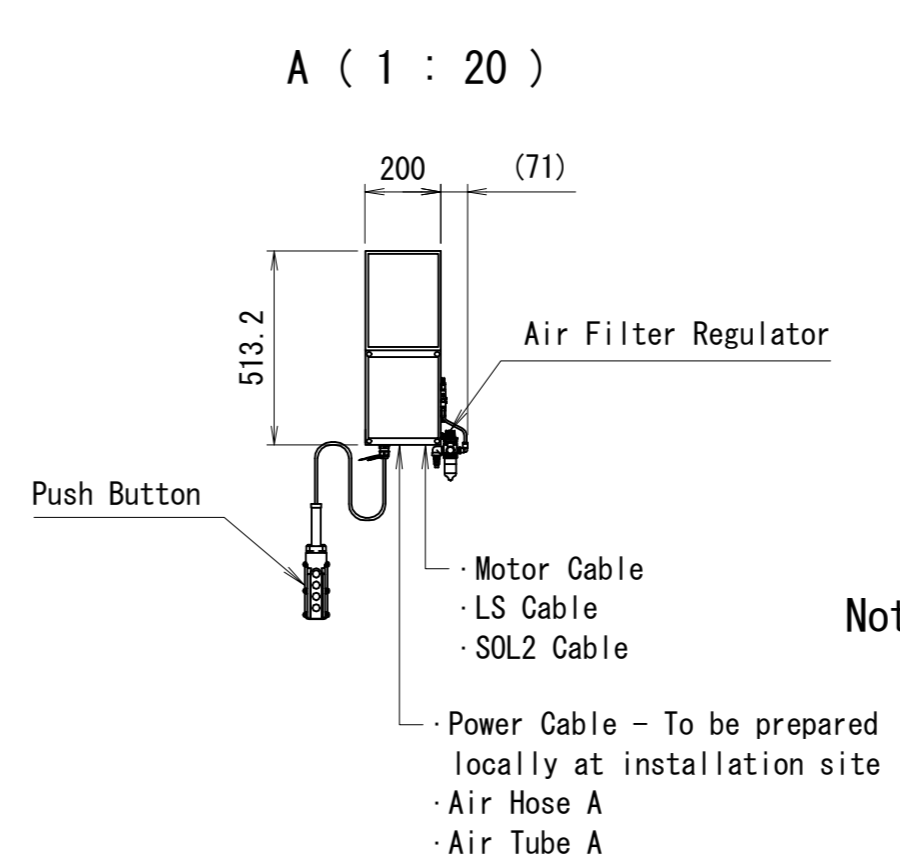
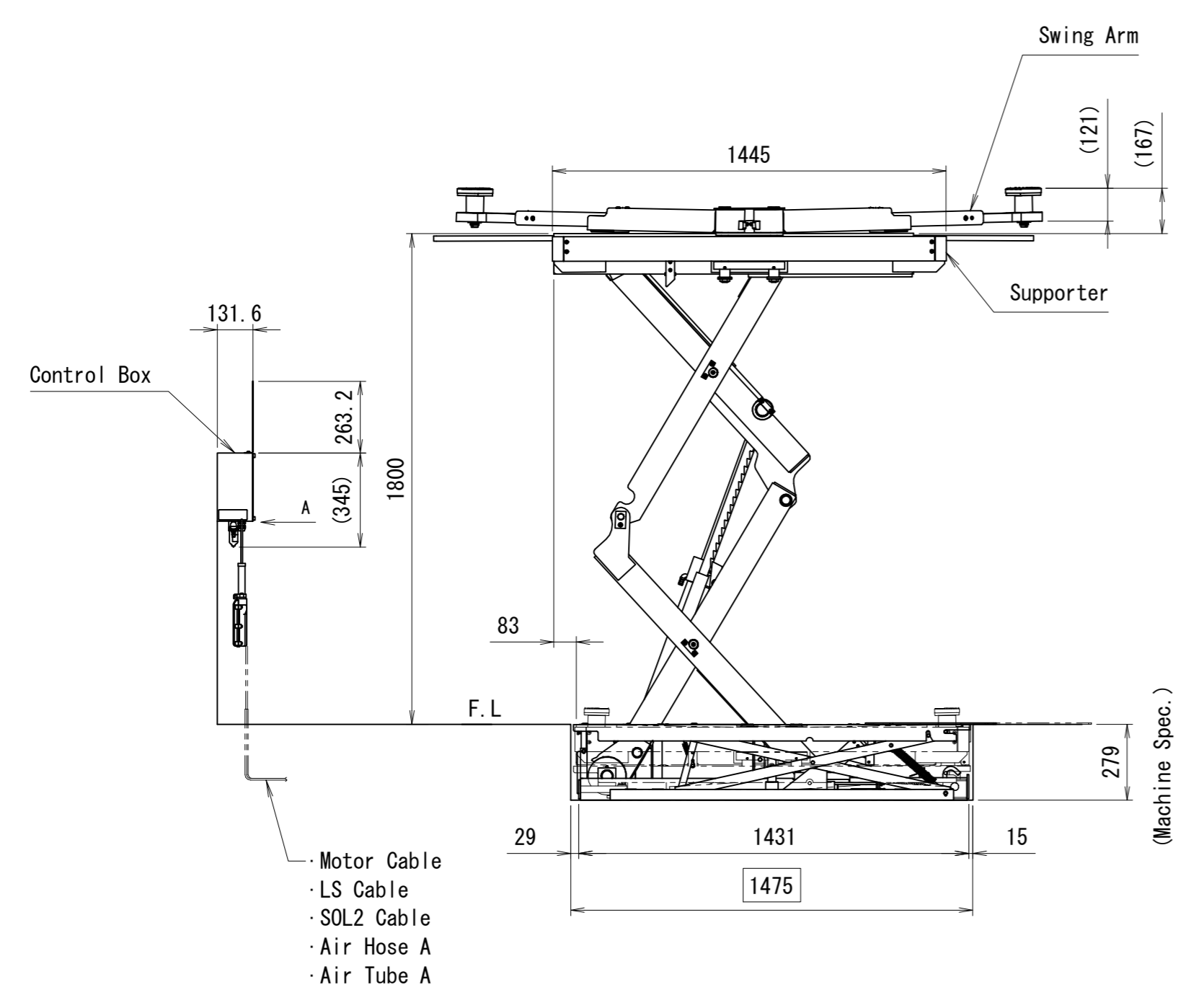
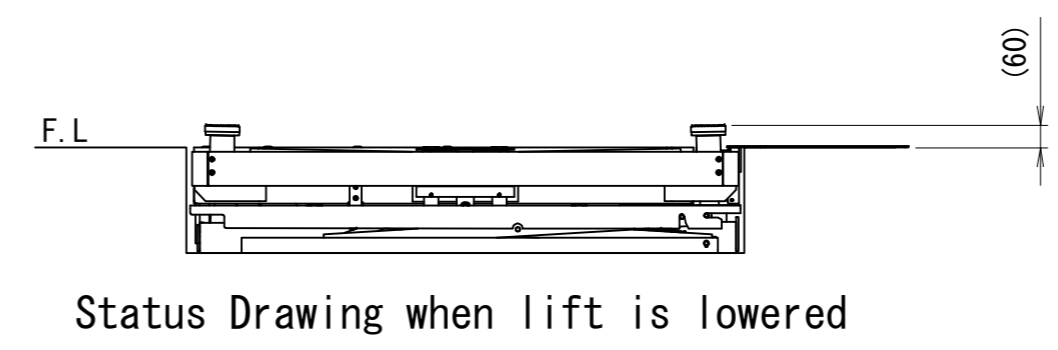


Model No.	BSC3200KUV
Capacity	3200kgs
Vertical Travel	1800mm
Lifting Speed (when 3,200kgs. Loaded)	Approx. 43 Seconds (60HZ)
Lifting Speed (when 3,200kgs. Loaded)	Approx. 52 Seconds (50HZ)
Lowering Speed (when 3,200kgs. Loaded)	Approx. 40 Seconds
Machine Weight	1350kgs.
Power	3PH 220/380/400/415V 50/60HZ
Motor	2.2KW 4P · 5 Minutes Rating
Drive System	Electro Hydraulic
Operation	Push Button
Control Volatage	DC24V
Oil	ISO VG32
Oil Volume	13L
Air Pressure	0.7Mpa

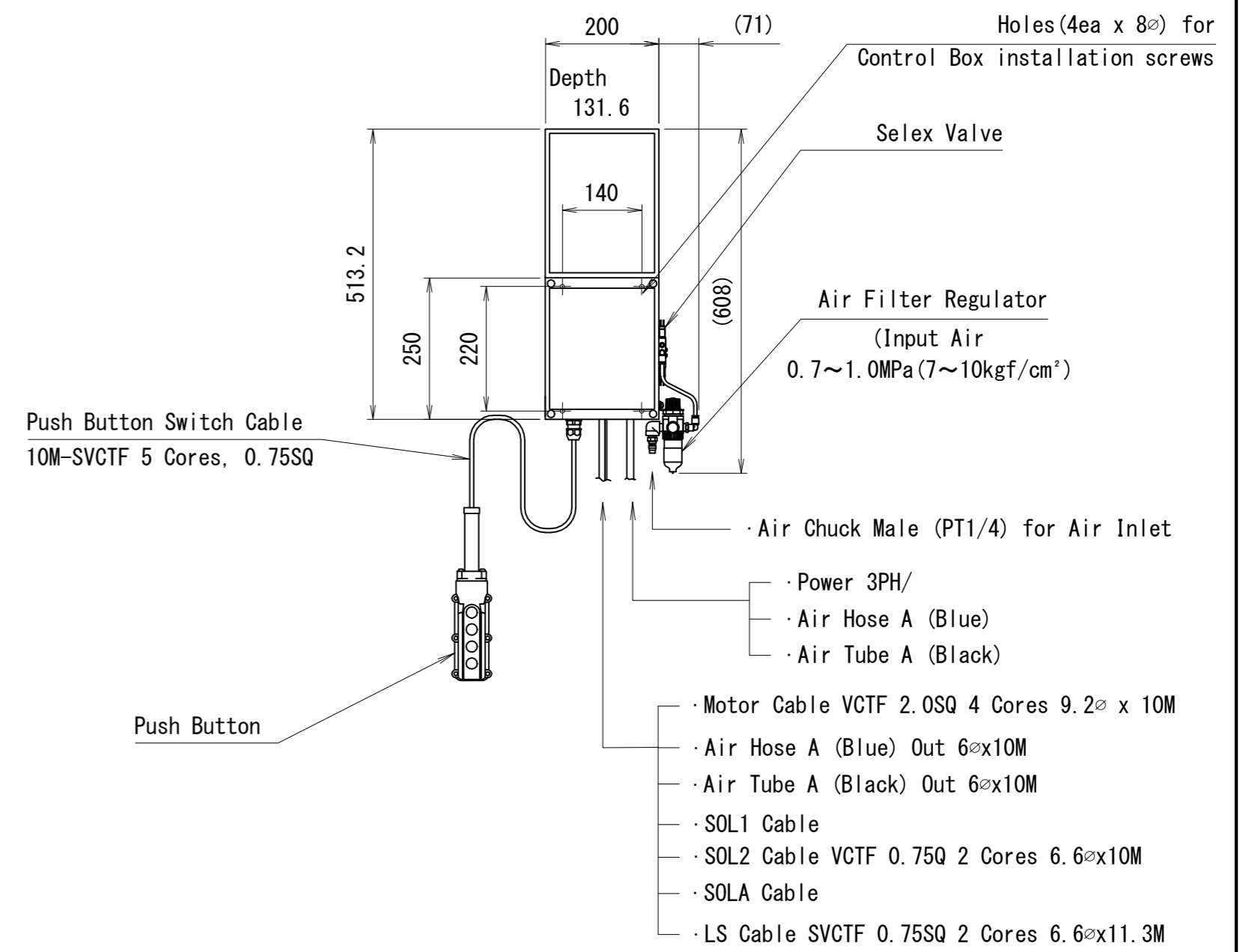
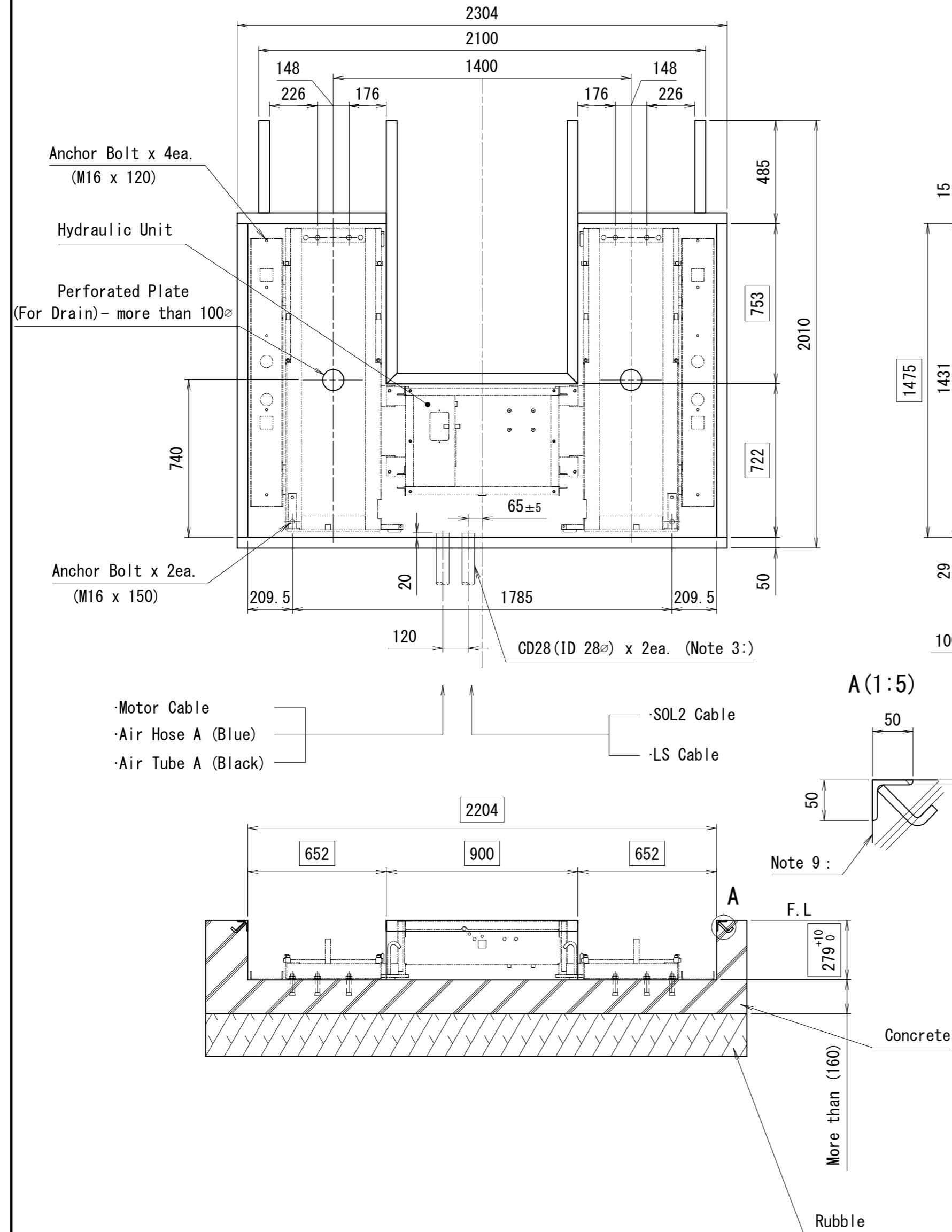


Note 1 : Spec. inside □ is Pit specification

承認	株式会社スギヤス										
品名	BSC3200KUV Spec. Drawing										
図番	BSC3200KUV -021000-12										
1	2	3	4	5	6	7	8	9	日付	2018/08/03	
製	石								尺	1:20	
訂正	年月日	記	事	担当承認							

Drive-In Direction

Control Box (installed remote)



- Things to be prepared locally at installation site
- Angle Irons for corner angle - bigger than t6x50x50-longer than 11 Meters
  - Conduit Tubing (CD28) x 2ea. for wiring and air tubings
  - Power Cable (bigger than 4 Cores 2SQ)
  - Air Piping for primary air (bigger than 3/8) 0.7~1.0MPa (7~10kgf/cm<sup>2</sup>)

- Note 1: Concrete floor must be strong enough to bear 5.5 ton weight under the lift frame base
- Note 2: Make sure to build the pit so that water can be completely discharged from the pit
- Note 3: Conduit tube will not be supplied with lift (to be prepared locally)
- Note 4: The spec in □ shows pit outside spec.
- Note 5: Lift unit and Control Box must be installed within 9 meters distance
- Note 6: Air hose between Lift unit and Control Box is OD6φ x ID4φ
- Note 7: Install the lift following the Installation Manual
- Note 8: The spec inside ( ) is for reference only
- Note 9: Concrete should be inside from surface of L Angle

株式会社スギヤス									
品名 BSC3200KUV Pit Drawing									
検図番 BSC3200KUV -022000-06									
1 2 3 4 5 6 7 8 9								日付 2018/08/03	
製 石								尺 度 FREE	
承認									
検図									
検図									
訂正	年月日	記	事	担当承認					